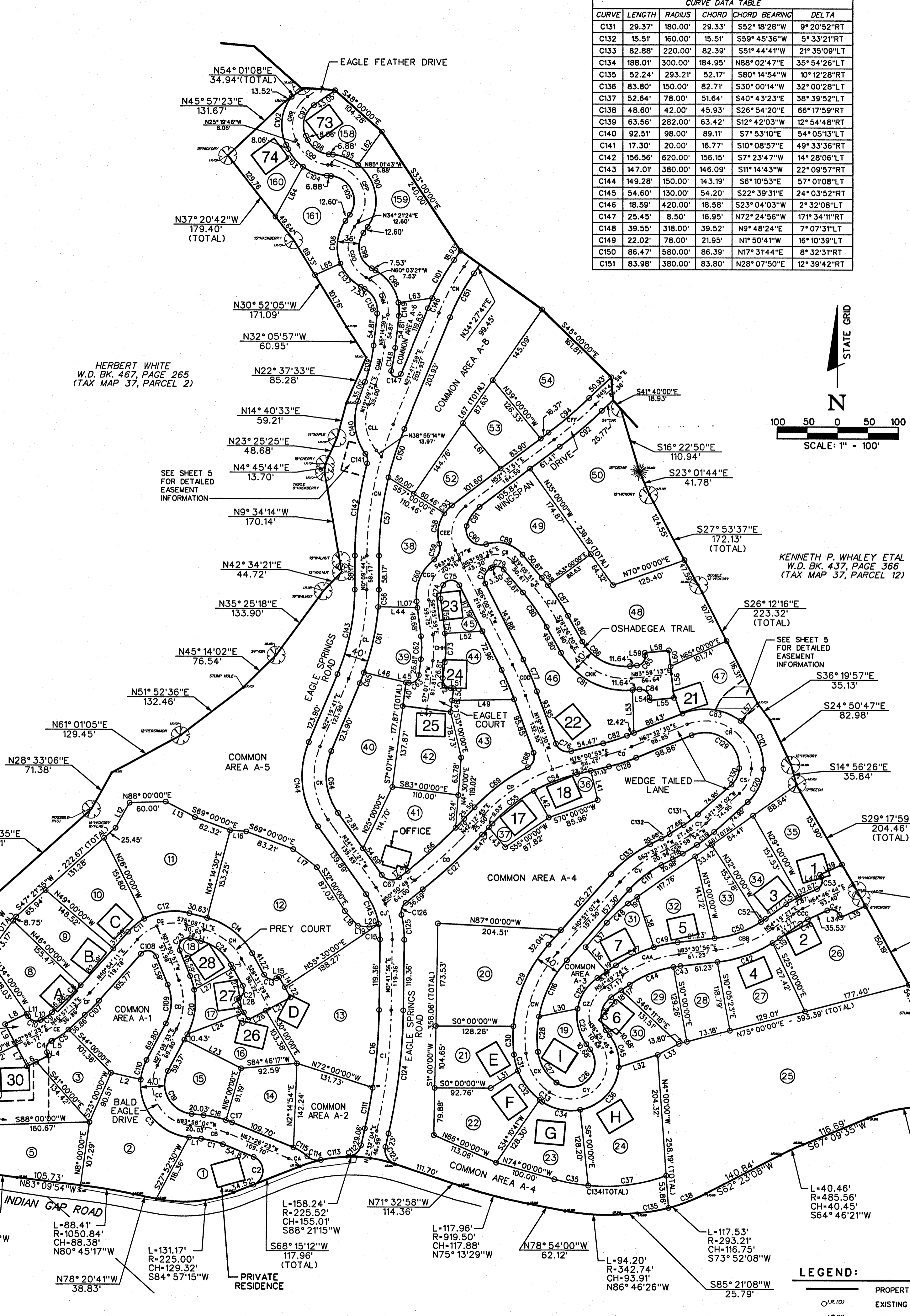


LOCATION MAP  
N.T.S.

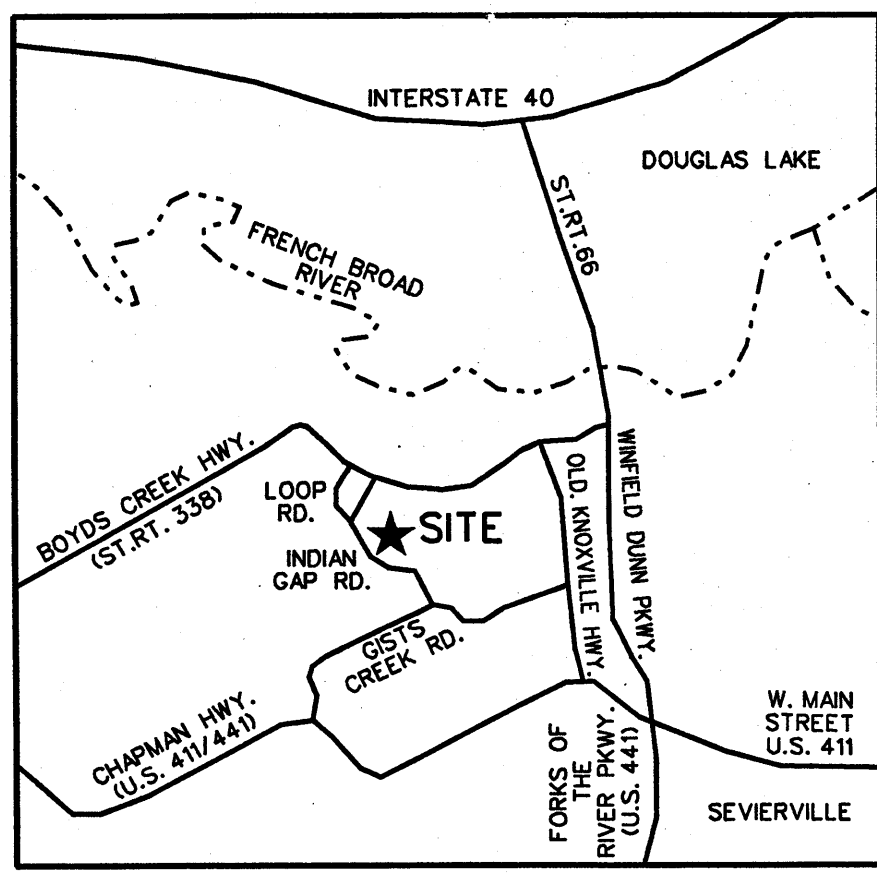
CURVE	LENGTH	RADIUS	CHORD	CHORD BEARING	DELTA
C1	37.50	130.00	37.37	S75°42'13"E	16°31'42"RT
C2	59.21	25.00	46.31	S0°24'25"W	135°41'35"RT
C3	139.81	90.00	126.17	S39°27'58"E	89°00'13"LT
C4	23.56	15.00	21.21	N17°59'24"E	90°00'02"RT
C5	33.59	120.00	33.48	N54°58'18"E	16°02'10"LT
C6	43.72	150.00	43.56	N22°20'59"E	16°41'59"RT
C7	40.08	150.00	39.96	N38°21'13"E	15°18'30"RT
C8	29.57	280.00	29.32	S43°55'43"W	6°03'02"RT
C9	22.39	80.00	22.32	S54°58'19"W	16°02'09"RT
C10	23.56	15.00	21.21	N72°00'37"W	90°00'01"RT
C11	34.43	100.00	34.26	S50°45'59"W	19°43'35"LT
C12	77.19	100.00	75.29	S82°44'38"W	44°13'42"LT
C13	23.56	15.00	21.21	N73°31'28"W	90°00'00"RT
C14	97.64	120.00	94.96	N51°50'00"W	46°37'03"LT
C15	25.70	130.00	25.65	S4°57'49"E	11°19'31"RT
C16	132.42	980.00	132.32	S4°34'11"W	7°44'31"RT
C17	11.7	170.00	11.7	N69°19'20"W	3°45'54"LT
C18	37.87	170.00	37.79	N77°35'11"W	12°45'48"LT
C19	96.98	50.00	82.48	N28°24'16"W	111°07'37"RT
C20	77.95	120.00	76.59	N88°33'01"E	37°13'03"LT
C21	23.56	15.00	21.21	S16°28'32"W	90°00'00"RT
C22	24.69	120.00	24.65	N15°57'14"W	11°47'27"LT
C23	33.17	15.00	26.81	N41°30'16"E	126°42'26"RT
C24	65.09	80.00	63.31	S51°50'00"E	46°37'03"RT
C25	63.97	80.00	62.28	S13°31'19"E	45°48'55"LT
C26	113.23	40.00	79.04	S44°39'57"W	162°11'29"RT
C27	61.70	75.00	59.98	N30°40'13"W	47°08'12"RT
C28	60.41	200.00	60.18	N1°33'04"E	17°18'22"LT
C29	152.82	240.00	150.25	S22°42'38"W	36°28'58"LT
C30	48.47	240.00	48.39	S1°18'59"E	11°34'16"LT
C31	27.84	115.00	27.77	S14°02'16"E	13°52'19"LT
C32	61.58	115.00	60.85	S36°18'54"E	30°40'56"LT
C33	5.18	115.00	5.18	S52°56'50"E	02°34'58"LT
C34	65.79	80.00	63.95	S77°47'55"E	47°07'12"LT
C35	57.04	300.00	56.96	N79°26'50"W	10°53'41"RT
C36	103.64	80.00	96.54	N41°31'44"E	74°13'30"LT
C37	130.96	300.00	129.93	S82°35'57"W	25°00'45"RT
C38	65.30	293.21	65.16	S68°45'59"W	12°45'33"RT
C39	14.31	220.00	14.31	N65°11'15"E	3°43'35"LT
C40	14.60	80.00	14.58	N59°33'06"E	10°27'17"RT
C41	23.56	15.00	21.21	S70°13'16"E	90°00'00"RT
C42	97.78	220.00	96.98	N70°46'59"E	25°27'54"LT
C43	11.80	180.00	11.80	N81°40'09"E	3°41'35"RT
C44	78.54	180.00	77.92	N67°19'23"E	24°59'56"RT
C45	57.03	80.00	55.83	N16°00'24"W	40°50'46"LT
C46	63.71	40.00	57.18	N9°11'49"E	91°15'10"RT
C47	70.12	220.00	69.83	S63°57'18"W	18°15'46"LT
C48	47.65	200.00	47.53	N47°20'33"E	13°38'59"RT
C49	40.05	220.00	39.99	S78°18'03"W	10°25'45"LT
C50	82.11	180.00	81.40	S70°26'49"W	26°08'15"RT
C51	21.90	120.00	21.87	S59°33'06"W	10°27'17"LT
C52	9.59	180.00	9.59	S55°51'04"W	3°03'15"RT
C53	23.56	15.00	21.21	S19°46'44"W	90°00'00"RT
C54	77.26	280.00	77.02	N68°06'35"E	15°48'36"RT
C55	87.93	280.00	87.57	N51°12'33"E	17°59'32"RT
C56	29.29	420.00	29.29	N20°09'37"E	3°59'45"LT
C57	132.58	580.00	132.28	N6°42'36"E	13°05'44"RT
C58	63.00	60.00	51.30	S9°13'38"W	50°36'54"LT
C59	29.28	25.00	27.63	S17°28'12"W	67°06'02"RT
C60	80.87	80.00	77.47	S22°03'37"W	57°55'12"LT
C61	114.32	420.00	113.97	N11°57'21"E	15°35'43"LT
C62	39.15	160.00	39.05	S0°08'38"W	14°01'13"RT
C63	23.56	15.00	21.21	S52°07'14"W	90°00'00"RT
C64	109.47	110.00	105.01	N6°10'53"W	57°01'09"RT
C65	18.87	420.00	18.87	N21°02'28"E	2°34'29"LT
C66	108.42	860.00	108.35	S47°14'08"W	7°13'25"RT
C67	33.05	20.00	29.41	N81°55'27"W	94°40'27"RT
C68	28.59	20.00	26.22	S21°16'40"W	81°53'46"RT
C69	11.78	320.00	11.71	S52°13'09"W	20°00'49"LT
C70	21.18	860.00	21.18	S42°55'04"W	1°24'39"RT
C71	53.20	480.00	53.18	S22°50'02"E	6°21'03"RT
C72	23.56	15.00	21.21	N37°52'46"W	90°00'00"RT
C73	48.94	200.00	48.82	N0°06'38"E	14°01'13"LT
C74	24.07	40.00	23.71	N10°20'20"E	34°28'39"RT
C75	33.08	15.00	26.76	S89°16'43"E	126°17'12"RT

CURVE	LENGTH	RADIUS	CHORD	CHORD BEARING	DELTA
C76	31.12	20.00	28.07	N64°01'53"W	89°08'28"RT
C77	57.64	520.00	57.61	N22°50'02"W	6°21'03"LT
C78	31.42	20.00	28.28	N81°59'27"E	90°00'00"RT
C79	20.14	15.00	18.66	S77°33'12"E	76°54'43"RT
C80	70.89	380.00	70.59	S33°46'06"E	10°39'30"RT
C81	141.56	120.00	133.49	S62°14'04"E	67°35'26"LT
C82	41.41	280.00	41.37	S71°48'42"W	8°28'23"RT
C83	101.23	97.00	96.70	N82°33'51"W	59°47'34"LT
C84	23.56	15.00	21.21	S51°01'47"E	90°00'00"RT
C85	23.56	15.00	21.21	S38°58'13"W	90°00'00"RT
C86	94.37	80.00	89.00	N62°14'04"W	67°35'26"LT
C87	61.79	420.00	61.73	N32°39'13"W	8°25'44"LT
C88	16.34	420.00	16.34	N37°58'58"W	2°13'46"LT
C89	66.80	55.00	62.77	N73°53'21"W	69°35'01"LT
C90	53.87	25.00	44.04	N46°56'58"W	123°27'48"RT
C91	39.22	60.00	38.52	N33°30'23"E	37°26'55"RT
C92	92.20	815.00	92.15	N48°59'23"E	6°28'55"LT
C93	18.53	60.00	18.46	S43°22'58"W	17°41'45"LT
C94	88.81	785.00	88.76	S48°59'23"W	6°28'55"LT
C95	45.70	78.00	45.04	N68°14'43"W	33°33'56"LT
C96	43.76	42.00	41.81	N55°10'44"W	59°41'55"RT
C97	58.17	42.00	53.63	N14°20'41"E	79°20'55"RT
C98	68.23	78.00	66.08	N34°59'40"W	50°07'20"LT
C99	69.21	42.00	61.84	N12°50'58"W	94°24'44"RT
C100	116.83	78.00	106.21	N8°33'11"W	85°49'10"LT
C101	74.23	420.00	74.13	S29°23'54"W	10°07'34"LT
C102	86.32	78.00	81.98	S6°22'25"W	63°24'22"LT
C103	38.70	78.00	38.31	S39°32'37"E	28°25'24"LT
C104	42.57	78.00	42.04	N17°59'24"E	90°00'02"RT
C105	87.51	42.00	72.52	S25°20'09"E	119°23'06"RT
C106	75.89	78.00	72.93	S6°28'58"W	55°44'51"LT
C107	33.79	320.00	33.78	N43°55'42"E	6°03'02"LT
C108	30.70	15.00	25.61	S60°28'23"E	11°14'12"RT
C109	68.43	80.00	66.36	S2°39'17"W	49°00'30"RT
C110	34.75	90.00	34.54	S16°05'51"W	22°07'23"LT
C111	70.02	980.00	70.01	S0°29'16"W	4°05'37"RT
C112	33.07	25.00	30.71	S50°25'38"W	75°47'07"RT
C113	43.02	225.52	42.98	S82°51'16"W	10°55'51"LT
C114	23.99	25.00	23.06	N75°07'33"W	54°58'14"RT
C115	27.65	80.00	27.51	N57°32'24"W	10°47'58"LT
C116	107.33	200.00	106.05	N25°34'41"E	30°44'52"RT
C117	67.81	180.00	67.41	N51°44'41"E	21°35'09"RT
C118	19.39	200.00	19.39	N59°45'36"E	5°33'21"LT
C119	35.89	220.00	35.85	N52°18'28"E	9°22'50"LT
C120	63.05	80.00	61.43	N25°02'09"E	45°09'16"LT
C121	93.33	97.00	89.77	N25°06'17"E	55°07'35"LT
C122	63.44	80.00	61.79	S32°06'16"W	45°26'16"LT
C123	36.69	25.00	33.48	N29°30'34"W	84°04'48"RT
C124	210.70	1,020.00	210.33	N6°37'00"E	11°50'08"LT
C125	41.92	170.00	41.81	N6°37'00"E	14°07'37"LT
C126	22.44	20.00	21.28	N18°42'34"E	64°16'28"RT
C127	135.63	900.00	135.50	N46°31'46"E	8°38'03"LT
C128	47.32	320.00	47.28	N71°46'42"E	8°28'23"RT
C129	114.33	57.00	96.10	S55°00'04"E	114°55'09"RT
C130	31.52	40.00	30.71	S25°02'09"W	45°09'16"LT



CURVE	LENGTH	RADIUS	CHORD	CHORD BEARING	DELTA
C131	29.37	180.00	29.33	S52°18'28"W	9°20'52"RT
C132	15.51	160.00	15.51	S59°45'36"W	5°33'21"RT
C133	82.88	220.00	82.39	S51°44'41"W	21°35'09"LT
C134	188.01	300.00	184.95	N88°02'47"E	35°54'26"LT
C135	52.24	293.21	52.17	S80°14'54"W	10°12'28"RT
C136	83.80	150.00	82.71	S30°00'14"W	32°00'28"LT
C137	52.64	78.00	51.64	S40°43'23"E	38°39'52"LT
C138	48.60	42.00	45.93	S26°54'20"E	66°17'59"RT
C139	63.56	282.00	63.42	S12°42'03"W	12°54'48"RT
C140	92.51	98.00	89.11	S7°53'10"E	54°05'13"LT
C141	17.30	20.00	16.77	S10°08'57"E	49°33'36"RT
C142	166.56	620.00	166.15	S7°23'47"W	14°28'06"LT
C143	147.01	380.00	146.09	S11°14'43"W	22°09'57"RT
C144	149.28	150.00	143.19	S6°10'53"E	57°01'08"LT
C145	54.60	130.00	54.20	S22°39'31"E	24°03'52"RT
C146	18.59	420.00	18.58	S23°04'03"W	2°32'08"LT
C147	125.45	8.50	16.95	N72°24'56"W	171°34'11"RT
C148	39.55	318.00	39.52	N9°48'24"E	7°07'31"LT
C149	22.02	78.00	21.92	N1°50'41"W	16°10'39"LT
C150	86.47	580.00	86.39	N17°31'44"E	8°32'31"RT
C151	83.98	380.00	83.80	N28°07'50"E	12°39'42"RT

LINE	BEARING	DISTANCE
L1	S83°58'04"E	20.03
L2	S77°00'00"E	50.47
L3	N62°59'23"E	22.91
L4	N27°00'39"W	5.00
L5	N62°59'23"E	1.17
L6	N62°59'23"E	17.09
L7	S27°00'37"E	40.00
L8	S62°59'23"W	40.00
L9	S27°00'37"E	40.00
L10	S62°59'17"W	1.17
L11	N27°00'39"W	5.00
L12	S28°33'06"E	48.44
L13	S62°00'00"E	54.96
L14	N28°31'28"W	20.00
L15	S61°28'31"W	5.00
L16	S86°00'00"E	26.91
L17	S52°00'00"E	50.00
L18	N41°00'00"W	32.90
L19	N84°00'00"W	18.83
L20	S72°04'10"E	16.53
L21	N61°28'31"E	46.82
L22	N28°31'28"W	20.00
L23	S63°00'00"E	105.80
L24	N68°06'40"E	101.04
L25	S28°31'28"E	14.53
L26	N61°28'31"E	33.18
L27	N60°00'00"E	

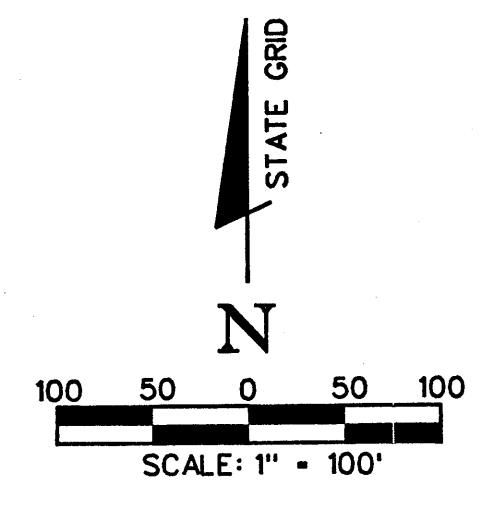


LOCATION MAP  
N.T.S.

VOL: LM6/118-118  
05031420

LM 1 PG 3A1 62785	0.00
09/23/2005 01:45 PM	0.00
VALUE	0.00
REG TAX	0.00
REG FEE	75.00
DP FEE	2.00
REG FEE	0.00
TOTAL	77.00

STATE OF TENNESSEE, SEVIER COUNTY  
SHERRY ROBERTSON HUSKEY  
REGISTERED SURVEYOR



RESUBDIVISION BOUNDARY CURVE DATA TABLE

CURVE	LENGTH	RADIUS	CHORD	CHORD BEARING	DELTA
C1	48.96'	185.00'	48.81'	S38°10'03"W	15°09'44" RT
C2	78.91'	285.00'	78.66'	S27°48'31"W	15°51'52" RT
C3	19.70'	135.00'	19.69'	S24°03'28"W	08°21'46" LT
C4	71.51'	390.00'	71.41'	S39°32'32"W	10°30'19" LT
C5	22.51'	165.00'	22.49'	S56°26'39"W	07°49'00" LT
C6	52.69'	390.00'	52.65'	S48°39'55"W	07°44'28" LT
C7	37.83'	165.00'	37.75'	S66°55'17"W	13°08'17" LT
C8	64.76'	165.00'	64.34'	N50°06'45"E	22°29'13" RT
C9	37.42'	285.00'	37.40'	N24°32'24"E	07°31'25" RT
C10	30.43'	165.00'	30.39'	N33°35'08"E	10°34'02" RT
C11	44.13'	168.00'	44.01'	N46°29'37"E	15°03'03" LT
C12	64.46'	100.00'	63.35'	N15°48'20"E	36°55'56" RT
C13	37.31'	75.00'	36.93'	N20°01'13"E	28°30'11" RT
C14	60.13'	315.00'	60.04'	S22°49'59"W	10°56'15" LT
C15	43.03'	190.00'	42.93'	S10°52'38"W	12°58'29" LT
C16	29.12'	10.00'	19.87'	S87°48'38"W	166°50'29" RT
C17	57.81'	580.00'	57.78'	N05°54'19"W	05°42'38" RT
C18	91.73'	220.00'	91.07'	N15°00'11"E	23°53'23" LT
C19	82.24'	195.00'	81.63'	S40°23'03"W	24°09'52" LT
C20	60.30'	315.00'	60.20'	N27°17'53"W	10°58'03" LT
C21	17.64'	315.00'	17.64'	N34°23'09"W	03°12'30" RT
C22	42.74'	1985.00'	42.74'	N35°22'24"E	01°14'01" RT
C23	25.51'	285.00'	25.50'	S24°22'42"E	05°07'42" RT
C24	100.93'	235.00'	100.15'	S09°30'38"E	24°36'27" RT
C25	45.00'	285.00'	44.96'	S31°27'59"E	09°02'50" RT
C26	47.29'	2015.00'	47.29'	S35°19'04"E	01°20'41" LT
C27	97.37'	265.00'	96.82'	N33°20'08"E	21°03'09" LT
C28	80.44'	265.00'	80.14'	N14°06'46"W	17°23'34" LT
C29	16.04'	265.00'	16.03'	N03°40'58"W	03°28'01" LT
C30	75.04'	220.00'	74.67'	N20°42'16"E	19°32'32" LT
C31	26.60'	180.00'	26.58'	N15°10'02"E	08°28'04" RT
C32	10.09'	75.00'	10.09'	N01°54'46"E	07°42'41" RT
C33	16.98'	285.00'	16.98'	N19°04'17"E	03°24'50" RT
C34	19.38'	220.00'	19.38'	N29°28'19"W	05°02'53" LT
C35	37.21'	25.00'	33.87'	N10°41'09"E	85°16'20" RT
C36	204.58'	1149.15'	204.31'	N48°13'19"E	10°12'01" LT
C37	74.59'	820.00'	74.56'	S29°23'25"E	05°12'42" LT
C38	90.91'	180.00'	89.95'	S17°31'38"E	28°56'16" RT
C39	61.79'	620.00'	61.77'	S05°54'49"E	05°42'38" LT
C40	166.83'	380.00'	164.95'	S05°18'58"W	28°10'12" RT
C41	32.51'	220.00'	32.48'	S15°10'02"W	08°28'04" LT
C42	50.84'	180.00'	50.67'	S19°01'30"W	16°11'00" RT
C43	40.76'	15.00'	29.33'	N75°02'42"W	155°40'34" RT
C44	113.81'	265.00'	112.94'	N09°30'38"E	24°36'27" LT
C45	114.65'	360.00'	114.16'	N43°24'46"E	18°14'47" RT
C46	49.37'	135.00'	49.10'	N63°00'47"E	20°57'16" RT
C47	87.22'	315.00'	86.94'	N27°48'31"E	15°51'52" LT
C48	11.11'	105.00'	11.11'	N22°54'31"E	06°03'49" RT
C49	56.90'	215.00'	56.73'	N38°10'03"E	15°09'44" LT

LOT AREA TABLE

LOT	SQUARE FEET	ACRES
55	13,671	0.314
56	11,469	0.263
57	12,408	0.285
58	17,403	0.400
59	16,891	0.388
60	11,084	0.254
61	14,322	0.329
62	20,169	0.463
63	9,722	0.223
64	16,178	0.371
65	15,882	0.365
66	11,724	0.269
67	13,250	0.304
68	18,237	0.419
69	17,088	0.392
70	12,672	0.291

LOT AREA TABLE

LOT	SQUARE FEET	ACRES
86	10,339	0.237
87	10,554	0.242
88	23,623	0.542
89	11,233	0.258
90	10,670	0.245

LOT AREA TABLE

LOT	SQUARE FEET	ACRES
114	11,851	0.272
115	10,809	0.248
116	9,967	0.229
117	9,041	0.208

LOT AREA TABLE

LOT	SQUARE FEET	ACRES
128	223,079	5.121
129	10,038	0.230
130	8,491	0.195

ROAD CENTERLINE CURVE DATA TABLE

CA	CB	CC	CD	CE	CF	CG	CH	CI	CJ	CK	CL	CM	CN	CO	CP	CQ	CR	CS	CT	CU	CV	CW	CX	CY	CAA	CBB	CCC	CCD	CEE	CFF																																																																																																																																	
97.33'	1000.00'	97.29'	N37°14'59"E	05°34'36" RT	122.76'	1000.00'	122.68'	N36°31'17"E	07°02'00" LT	44.14'	1000.00'	44.14'	N31°44'24"E	02°31'44" LT	68.22'	200.00'	67.89'	N20°42'16"E	19°32'32" LT	196.66'	400.00'	194.69'	N05°18'58"E	28°10'12" LT	59.80'	600.00'	59.78'	N05°54'49"W	05°42'38" RT	72.77'	800.00'	72.75'	N29°23'25"W	05°12'42" RT	72.59'	550.00'	72.53'	N23°00'13"W	07°33'41" RT	52.93'	200.00'	52.77'	N38°10'03"E	15°09'44" LT	58.49'	800.00'	58.48'	N28°29'30"E	04°11'22" LT	84.99'	800.00'	84.95'	N23°21'13"E	06°05'14" LT	80.80'	300.00'	80.55'	N28°01'31"E	15°25'52" LT	83.07'	300.00'	82.80'	N27°48'31"E	15°51'52" LT	60.44'	120.00'	59.80'	N34°18'16"E	28°51'22" LT	45.37'	180.00'	45.25'	N41°30'40"E	14°26'34" LT	119.42'	375.00'	118.92'	N43°24'46"E	18°14'47" RT	54.86'	150.00'	54.55'	N63°00'47"E	20°57'16" RT	63.66'	150.00'	63.18'	N61°19'59"E	24°18'54" LT	49.79'	250.00'	49.71'	N43°28'12"E	11°24'40" LT	88.76'	120.00'	86.75'	S39°58'22"W	42°22'54" RT	148.61'	200.00'	145.22'	S40°04'08"W	42°34'27" RT	103.84'	180.00'	102.41'	S44°49'44"W	33°03'15" LT	57.27'	300.00'	57.18'	S22°50'00"W	10°56'15" LT	74.27'	150.00'	73.51'	N39°50'04"E	28°22'08" LT	83.66'	400.00'	83.66'	N19°39'30"E	11°59'00" LT	277.11'	250.00'	263.14'	N18°05'16"W	63°30'32" LT	107.97'	250.00'	107.13'	N37°28'13"W	24°44'39" RT	68.18'	400.00'	68.10'	N29°58'52"W	09°45'57" LT	139.00'	2000.00'	138.97'	S33°59'57"E	03°58'55" LT	74.22'	300.00'	74.04'	S28°54'08"E	14°10'33" RT	107.37'	250.00'	106.55'	S09°30'38"E	24°36'27" RT	65.26'	60.00'	62.09'	S28°21'56"E	62°19'04" LT

LINE DATA TABLE

LINE	BEARING	DISTANCE
L1	S30°35'11"W	36.37'
L2	S45°44'56"W	35.45'
L3	N34°10'00"E	62.98'
L4	S30°35'11"W	76.13'
L5	N34°10'00"E	61.77'
L6	S27°03'31"W	45.61'
L7	S30°35'11"W	31.18'
L8	S19°49'19"W	25.47'
L9	S42°26'50"W	31.47'
L10	S19°52'35"W	25.09'
L11	S52°32'09"W	26.30'
L12	S65°51'04"W	26.83'
L13	S73°29'26"W	74.45'
L14	N10°16'01"E	41.15'
L15	S28°18'07"W	49.87'
L16	S17°21'52"W	21.22'
L17	N8°46'08"W	3.27'
L18	N3°03'30"W	37.43'
L19	N73°00'00"E	49.47'
L20	S60°00'00"E	76.15'
L21	S28°18'07"W	31.83'
L22	N21°48'52"W	42.63'
L23	N35°59'24"W	79.49'

LINE DATA TABLE

LINE	BEARING	DISTANCE
L24	N35°59'24"W	46.20'
L25	S35°59'24"E	76.05'
L26	S56°40'00"W	79.80'
L27	N54°00'00"E	86.27'
L28	S35°59'24"E	49.64'
L29	N24°39'39"W	59.73'
L30	N35°38'36"W	45.51'
L31	N59°55'00"E	80.06'
L32	N49°03'07"W	69.56'
L33	N25°53'22"W	73.37'
L34	N43°22'00"E	111.47'
L35	N29°40'21"W	11.39'
L36	N49°03'07"E	82.66'
L37	N10°16'01"E	69.78'
L38	N13°20'02"E	57.69'
L39	N10°16'01"E	51.01'
L40	N25°39'00"E	21.15'
L41	N13°20'02"E	93.48'
L42	N54°01'08"E	14.77'
L43	N70°44'01"E	9.20'
L44	N25°39'00"E	30.53'
L45	S54°20'00"W	71.91'
L46	N01°46'59"W	12.95'

LINE DATA TABLE

LINE	BEARING	DISTANCE
L47	N10°56'01"E	36.02'
L48	N19°24'04"E	36.54'
L49	N01°56'34"W	19.09'
L50	N17°21'51"E	21.22'
L51	S03°03'30"E	37.43'
L52	S19°24'04"W	36.54'
L53	S10°56'01"E	36.02'
L54	N02°47'36"E	68.82'
L55	N33°53'49"E	93.74'
L56	N73°29'26"E	80.38'
L57	N73°29'26"E	138.97'
L58	N35°44'27"E	104.55'
L59	N35°44'27"E	9.92'
L60	N45°44'56"E	60.61'
L61	N30°35'11"E	126.01'
L62	N41°40'00"W	18.93'

- NOTES:
- IRON RODS WITH CAPS SET AT ALL CORNERS NOT RECOVERED UNLESS OTHER MONUMENTATION IS NOTED ON DRAWING.
  - UNDERGROUND UTILITIES SHOWN APPROXIMATELY BY AVAILABLE UTILITY MAPS AND VISIBLE APPURTENANCES AND LOCATIONS SHOULD BE VERIFIED BY THE APPROPRIATE UTILITY AUTHORITY BEFORE EXCAVATION OR CONSTRUCTION.
  - CLT TAX MAP 37 PARCEL 1
  - REFERENCE RECORDED PLATS IN LARGE MAP CABINET 3, PAGES 115 AND 166. PROPOSED LOTS ARE SUBJECT TO PLANNED UNIT DEVELOPMENT DOCUMENTS RECORDED IN W.D. BOOK 1225, PAGE 783; WITH AN ANNEXATION OF ADDITIONAL LANDS IN W.D. BOOK 1468, PAGE 702. ALSO SUBJECT TO FINAL ORDER IN SEVIER COUNTY CHANCERY COURT DOCKET NO. 04-6-245.
  - DEED REFERENCE: W.D. BK. 1119, PG. 172; W.D. BK. 1119, PG. 665; AND IN W.D. BK. 1161, PG. 505.
  - LOT LINES, RIGHT-OF-WAYS AND LOT NUMBERS AS SHOWN IN PHASES 1 AND 2 OF EAGLE SPRINGS SUBDIVISION REFERENCED ABOVE ARE HEREBY DELETED.
  - TOTAL DEVELOPMENT AREA: 6,437,282 SQ. FT. OR 147.780 ACRES.
  - TOTAL NUMBER OF LOTS: 160, (LOT 151 WAS OMITTED)
  - PROPERTY IS SUBJECT TO A PERIPHERY BOUNDARY SETBACK OF 10' ALONG THE SIDES AND REAR BOUNDARY LINES.

TAX CARD OWNER:  
DEER PATH VACATIONS L.P.  
2788 WINDFALL ESTATES DRIVE  
SEVIERVILLE, TENNESSEE 37876

**BWSC**  
ENGINEERS ARCHITECTS PLANNERS  
LANDSCAPE ARCHITECTS AND SURVEYORS  
Suite 2400 First Tennessee Plaza, Knoxville, Tennessee 37928  
Phone (606) 637-2820 Fax (606) 673-8554

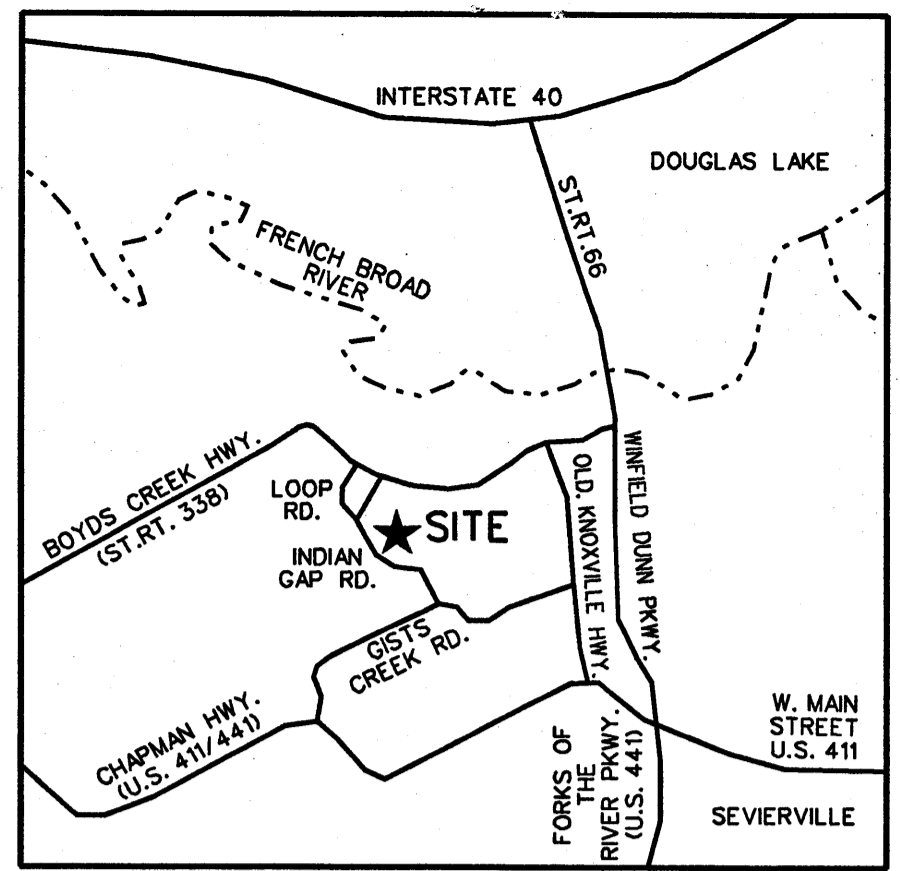
FINAL PLAT  
**EAGLE SPRINGS SUBDIVISION**  
SHEET 3 OF 5  
FOURTEENTH CIVIL DISTRICT, SEVIER COUNTY, TENNESSEE

PREPARED FOR:  
EAGLE SPRINGS RESORT OWNERS ASSOCIATION, INCORPORATED  
2788 WINDFALL ESTATES DRIVE  
SEVIERVILLE, TENNESSEE 37876

DRAWN BY: TDR  
DATE: 05-27-05  
REVISED: 06-09-05  
FILE NO. 31091-00



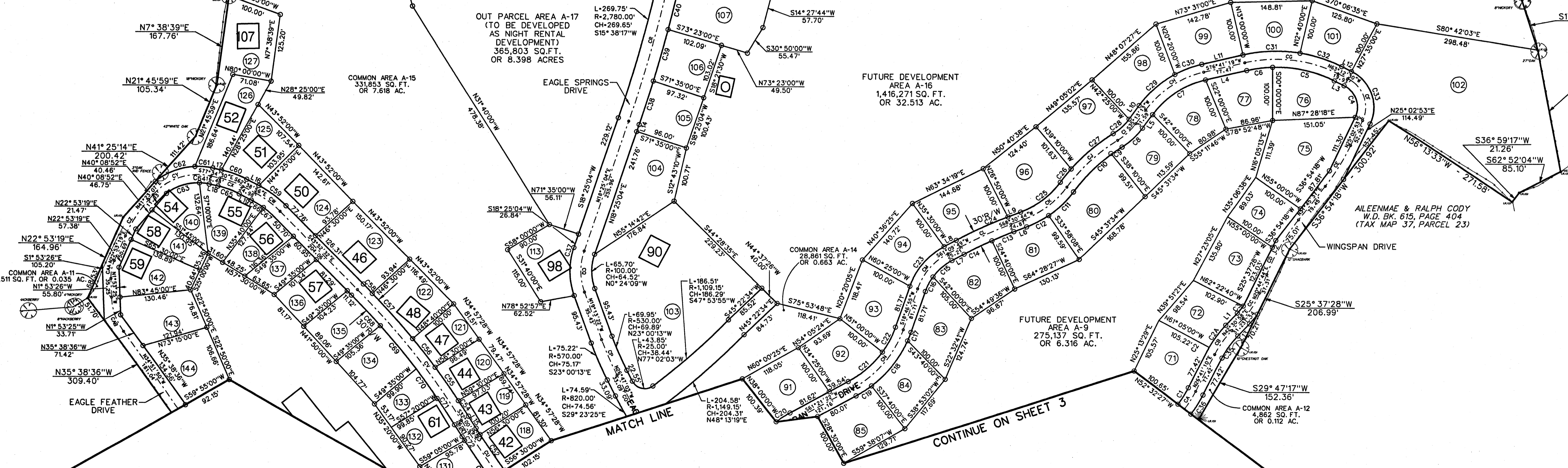
Certificate of Survey  
I hereby certify that this is a category 1 survey and the ratio of precision of the unadjusted survey is 1:15000 as shown herein. This survey has been prepared in accordance with The Standards of Practice for Land Surveys in the State of Tennessee.  
*Timothy D. Robinson* Tenn. Reg. No. 2044  
Date: 6-9-05



CURVE	LENGTH	RADIUS	CHORD	CHORD BEARING	DELTA
C53	13.94'	1,985.00'	13.94'	N32°12'32"W	0°24'08"LT
C54	34.10'	1,515.00'	34.10'	N32°39'11"W	1°17'23"LT
C55	74.95'	1,515.00'	74.95'	N34°42'54"W	2°50'05"LT
C56	68.02'	1,515.00'	68.01'	N37°25'07"W	2°34'21"LT
C57	112.85'	1,515.00'	112.83'	N40°50'20"W	4°16'05"LT
C58	23.87'	1,515.00'	23.87'	N43°25'27"W	0°54'09"LT
C59	62.25'	190.00'	61.98'	N53°15'43"W	18°46'24"LT
C60	49.50'	190.00'	49.36'	N70°06'43"W	14°55'34"LT
C61	32.79'	125.00'	32.69'	N85°05'22"W	15°01'44"LT
C62	79.35'	125.00'	78.03'	S69°12'37"W	38°22'18"LT
C63	64.95'	95.00'	63.69'	N72°01'37"E	39°10'18"RT
C64	17.93'	95.00'	17.90'	S82°58'51"E	10°48'44"RT
C65	41.68'	160.00'	41.56'	S70°06'42"E	14°55'34"RT
C66	25.96'	160.00'	25.93'	S58°00'02"E	9°17'47"RT
C67	26.46'	160.00'	26.43'	S48°36'50"E	9°28'37"RT
C68	77.99'	1,485.00'	77.98'	S42°22'15"E	3°00'33"RT
C69	104.80'	1,485.00'	104.78'	S38°50'40"E	4°02'36"RT
C70	66.67'	1,485.00'	66.67'	S35°32'12"E	2°34'21"RT
C71	58.11'	1,485.00'	58.11'	S33°07'45"E	2°14'32"RT
C72	8.78'	2,015.00'	8.78'	S32°07'57"E	0°14'59"RT
C73	83.97'	2,015.00'	83.97'	S33°27'05"E	2°23'16"LT

- NOTES:**
- IRON RODS WITH CAPS SET AT ALL CORNERS NOT RECOVERED UNLESS OTHER MONUMENTATION IS NOTED ON DRAWING.
  - UNDERGROUND UTILITIES SHOWN APPROXIMATELY BY AVAILABLE UTILITY MAPS AND VISIBLE APURTANCES AND LOCATIONS SHOULD BE VERIFIED BY THE APPROPRIATE UTILITY AUTHORITY BEFORE EXCAVATION OR CONSTRUCTION.
  - CLT TAX MAP 37 PARCEL 1
  - REFERENCE RECORDED PLATS IN LARGE MAP CABINET 3, PAGES 115 AND 166 PROPOSED LOTS ARE SUBJECT TO UNPLANNED UNIT DEVELOPMENT DOCUMENTS RECORDED IN W.D. BOOK 1225, PAGE 783; WITH AN ANNEXATION OF ADDITIONAL LANDS IN W.D. BOOK 1486, PAGE 702; ALSO SUBJECT TO FINAL ORDER IN SEVIER COUNTY CHANCERY COURT DOCKET NO. 04-6-245.
  - DEED REFERENCE: W.D. BK. 1119, PG. 172; W.D. BK. 1119, PG. 665; AND IN W.D. BK. 1161, PG. 505.
  - LOT LINES, RIGHT-OF-WAYS AND LOT NUMBERS AS SHOWN IN PHASES 1 AND 2 OF EAGLE SPRINGS SUBDIVISION REFERENCED ABOVE ARE HEREBY DELETED.
  - TOTAL DEVELOPMENT AREA: 6,437,282 SQ. FT. OR 147,780 ACRES.
  - TOTAL NUMBER OF LOTS: 160, (LOT 151 WAS OMITTED)
  - PROPERTY IS SUBJECT TO A PERIPHERY BOUNDARY SETBACK OF 10' ALONG THE SIDES AND REAR BOUNDARY LINES.

McKINDRY HAMMER AND WILLIAM R. HAMMER  
W.D. BK. 451, PAGE 436  
(TAX MAP 25, PARCEL 77)



CURVE	LENGTH	RADIUS	CHORD	CHORD BEARING	DELTA
C1	35.76'	185.00'	35.71'	S32°13'31"W	9°31'43"RT
C2	7.30'	215.00'	7.30'	S27°39'31"W	1°56'39"LT
C2A	52.11'	215.00'	51.98'	S35°34'24"W	13°53'09"LT
C3	17.36'	135.00'	17.36'	S38°49'30"W	4°37'35"RT
C4	69.32'	45.00'	62.66'	N59°04'48"E	88°15'24"RT
C5	116.59'	235.00'	115.40'	S77°25'16"E	28°25'31"RT
C6	47.90'	235.00'	47.81'	N82°31'39"E	11°40'39"RT
C7	119.42'	165.00'	116.83'	N55°57'18"E	41°28'08"RT
C8	51.94'	135.00'	51.62'	N46°14'33"E	22°02'39"LT
C9	23.48'	335.00'	23.45'	N55°15'31"E	4°00'44"RT
C10	98.61'	335.00'	98.26'	N44°49'11"E	16°51'57"RT
C11	63.59'	195.00'	63.31'	N45°43'42"E	18°41'01"LT
C12	45.75'	195.00'	45.64'	N61°47'28"E	13°26'31"LT
C13	43.65'	785.00'	43.64'	N66°55'10"E	3°11'09"RT
C14	57.03'	785.00'	57.02'	N63°14'42"E	4°09'46"RT
C15	46.80'	105.00'	46.41'	N48°23'44"E	25°32'09"RT
C16	30.87'	105.00'	30.76'	N27°12'17"E	16°50'44"RT
C17	17.35'	215.00'	17.34'	N21°05'37"E	4°37'23"LT
C18	108.57'	215.00'	107.42'	N37°52'17"E	28°55'57"LT
C19	33.84'	215.00'	33.81'	N56°50'48"E	9°01'07"LT
C20	30.26'	195.00'	30.22'	S56°54'41"W	8°53'23"LT
C21	84.26'	185.00'	83.53'	S48°18'30"W	26°05'44"RT
C22	53.21'	185.00'	53.02'	S21°01'16"W	16°28'43"RT
C23	99.86'	135.00'	97.60'	S39°58'22"W	42°22'54"LT
C24	104.53'	815.00'	104.46'	S64°50'16"W	7°20'55"LT
C25	92.52'	165.00'	91.31'	S52°28'58"W	32°07'32"RT
C26	31.49'	365.00'	31.48'	S38°51'28"W	4°56'33"LT
C27	101.52'	365.00'	101.19'	S49°17'49"W	15°56'08"LT
C28	40.40'	105.00'	40.15'	S46°14'33"W	22°02'39"RT
C29	88.16'	195.00'	87.41'	S48°10'18"W	25°54'08"LT
C30	52.93'	195.00'	52.77'	S68°53'55"W	15°33'06"LT
C31	105.09'	265.00'	104.40'	S88°02'56"W	22°43'14"LT
C32	80.40'	265.00'	80.09'	N71°53'58"W	17°22'57"LT

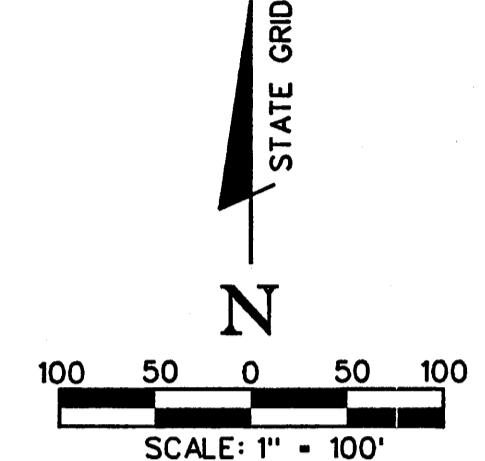
CURVE	LENGTH	RADIUS	CHORD	CHORD BEARING	DELTA
C33	115.53'	75.00'	104.44'	N19°04'48"W	88°15'23"LT
C34	23.19'	165.00'	23.17'	N38°29'20"E	8°03'14"LT
C35	51.11'	185.00'	50.95'	N34°36'04"E	15°49'48"RT
C36	41.57'	215.00'	41.51'	N32°13'31"E	11°04'42"LT
C37	91.97'	140.00'	90.33'	S0°24'09"E	37°38'27"LT
C38	86.25'	2,820.00'	86.25'	N17°32'30"E	1°45'09"LT
C39	99.94'	2,820.00'	99.93'	N15°39'01"E	2°01'50"LT
C40	87.44'	2,820.00'	87.44'	N13°44'48"E	1°46'36"LT
C41	11.78'	1,180.00'	11.78'	N13°08'39"E	0°34'19"RT
C42	99.28'	1,180.00'	99.25'	N19°50'26"E	4°49'14"RT
C43	38.02'	1,180.00'	38.02'	N19°10'26"E	1°50'46"RT
C44	32.64'	1,020.00'	32.64'	N19°10'48"E	1°50'00"LT
C45	46.05'	1,020.00'	46.04'	N16°58'12"E	2°35'12"LT
C46	23.16'	25.00'	22.34'	N42°13'06"E	53°04'59"RT
C47	70.51'	50.00'	64.81'	N28°21'33"E	80°48'05"LT
C48	50.00'	50.00'	47.94'	N40°41'22"W	57°17'45"LT
C49	52.85'	50.00'	50.42'	S48°54'17"W	60°33'46"LT
C50	48.98'	50.00'	47.04'	S9°26'18"E	58°07'28"LT
C51	23.20'	25.00'	22.38'	S10°54'34"E	53°10'53"RT
C52	81.28'	1,985.00'	81.28'	N33°35'00"W	2°20'46"RT

CURVE	LENGTH	RADIUS	CHORD	CHORD BEARING	DELTA
CA	38.67'	200.00'	38.61'	N32°13'31"E	11°04'42"LT
CB	55.26'	200.00'	55.08'	N34°36'04"E	15°49'48"RT
CC	57.00'	150.00'	56.65'	N31°37'50"E	21°46'15"LT
CD	118.79'	400.00'	118.35'	N29°15'10"E	17°00'53"RT
CE	88.75'	400.00'	88.57'	N31°24'15"E	12°42'43"LT
CF	92.42'	60.00'	83.55'	N19°04'48"W	88°15'23"LT
CG	174.98'	250.00'	171.43'	N83°15'35"E	40°06'11"LT
CH	130.28'	180.00'	127.45'	S55°57'16"W	41°28'08"RT
CI	46.17'	120.00'	45.89'	S46°14'33"W	22°02'39"RT
CJ	127.54'	350.00'	126.83'	S46°49'32"W	52°04'11"LT
CK	100.83'	180.00'	99.61'	S52°26'58"W	32°07'32"RT
CL	102.61'	800.00'	102.54'	S64°50'16"W	7°20'55"LT
CM	88.76'	120.00'	86.75'	S39°58'22"W	42°22'54"LT
CN	148.61'	200.00'	145.22'	S40°04'08"W	42°34'27"RT
CO	72.77'	800.00'	72.75'	N29°23'25"E	5°12'42"RT
CP	72.58'	550.00'	72.53'	N23°00'13"W	7°33'41"RT
CQ	78.83'	120.00'	77.42'	N0°24'09"W	37°38'27"RT
CR	271.70'	2,800.00'	271.59'	N15°38'17"E	5°33'35"LT
CS	151.61'	1,200.00'	151.50'	N16°28'39"E	7°14'19"RT
CT	77.97'	1,000.00'	77.95'	N17°51'47"E	4°28'03"LT
CU	139.00'	2,000.00'	138.97'	S33°59'57"E	3°58'55"LT
CV	310.69'	1,500.00'	310.13'	S37°56'30"E	11°52'02"RT
CW	57.34'	175.00'	57.08'	S53°15'43"E	18°46'24"RT
CX	45.59'	175.00'	45.46'	S70°06'42"E	14°55'35"RT
CY	117.19'	110.00'	117.2'	N71°54'19"E	61°02'24"RT
CZ	80.71'	250.00'	80.36'	N32°08'13"E	16°29'48"RT
CAA	34.60'	80.00'	34.33'	N10°29'57"E	24°46'44"RT
CAB	69.06'	120.00'	68.11'	N18°22'38"W	32°58'25"RT
CAC	50.37'	120.00'	50.00'	N03°36'17"E	24°02'58"LT
CAD	48.43'	120.00'	48.10'	N19°58'51"W	23°07'20"LT
CAE	102.67'	43.00'	79.96'	S80°03'22"W	136°48'13"LT
CAF	13.18'	80.00'	13.17'	S06°55'59"W	09°26'32"LT

VOL: LM6/118-118  
05031420

DATE: 06/23/2005 01:45 PM  
VALUE: 0.00  
MFG TAX: 0.00  
FRM TAX: 0.00  
INC FEE: 9.00  
DP FEE: 2.00  
REG FEE: 0.00  
TOTAL: 77.00

SHERRY ROBERTSON HUSKEY  
REGISTERED SURVEYOR



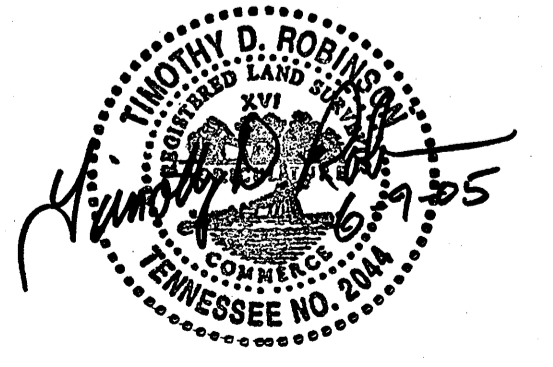
LINE	BEARING	DISTANCE
L1	S42°30'58"W	31.23'
L2	S25°37'28"W	14.25'
L3	S63°12'30"W	19.93'
L4	N78°41'19"E	77.47'
L5	N35°13'13"E	31.59'
L6	N68°30'44"E	24.87'
L7	N61°09'49"E	25.21'
L8	S61°09'49"W	25.21'
L9	S68°30'44"W	24.87'
L10	S35°13'13"W	31.59'
L11	S78°41'19"W	77.51'
L12	N63°12'30"W	19.93'
L13	N42°50'58"E	31.23'
L14	N18°25'04"E	14.19'
L15	N32°00'29"W	26.21'
L16	N62°38'55"W	24.98'
L17	N77°34'29"W	16.48'
L18	S77°34'29"E	16.48'
L19	S62°38'55"E	24.98'
L20	S32°00'29"E	26.21'

Certificate of Survey

I hereby certify that this is a category 1 survey and the ratio of precision of the unadjusted survey is 1:15000 as shown herein. This survey has been prepared in accordance with The Standards of Practice for Land Surveys in the State of Tennessee.

Timothy D. Robi  
Tenn. Reg. No. 2044

Date: 6-9-05



**LEGEND:**

- PROPERTY LINE
- IR. 001 EXISTING IRON ROD FOUND
- IR. 002 NEW IRON ROD SET
- POST POST

**TAX CARD OWNER:**  
DEER PATH VACATIONS L.P.  
2788 WINDFALL ESTATES DRIVE  
SEVIERVILLE, TENNESSEE 37876

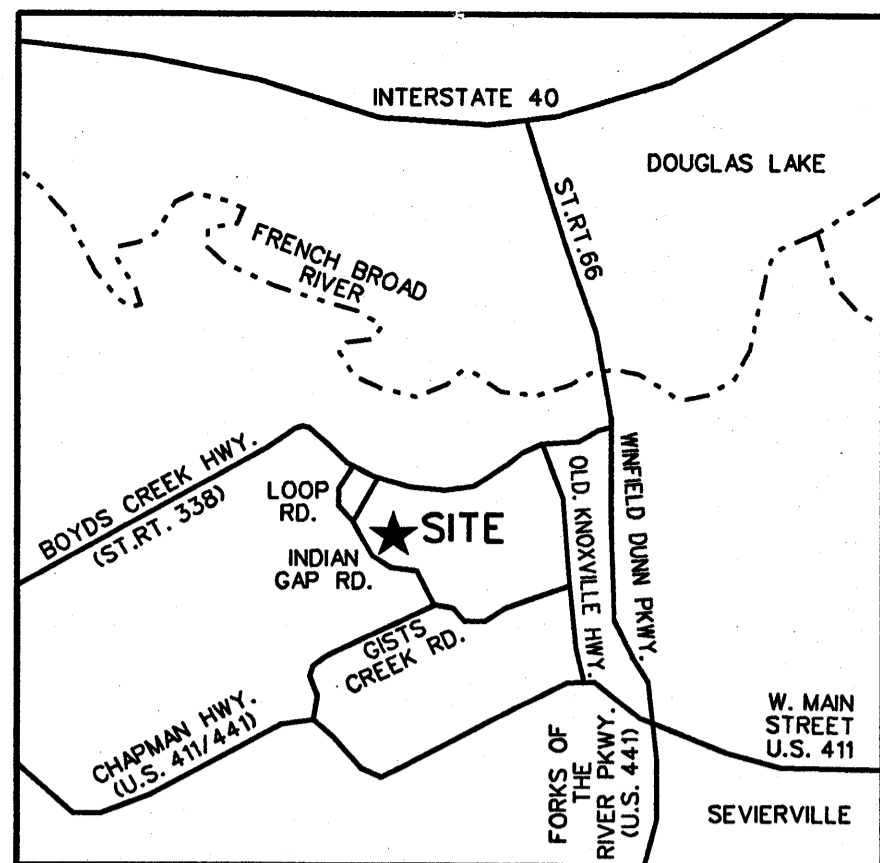
**FINAL PLAT**  
**EAGLE SPRINGS SUBDIVISION**

SHEET 4 OF 5  
FOURTEENTH CIVIL DISTRICT, SEVIER COUNTY, TENNESSEE

PREPARED FOR: EAGLE SPRINGS RESORT OWNERS ASSOCIATION, INCORPORATED  
2788 WINDFALL ESTATES DRIVE SEVIERVILLE, TENNESSEE 37876

DRAWN BY: TDR  
DATE: 05-27-05  
REVISED: 06-09-05  
FILE NO. 31091-00





LOCATION MAP  
N.T.S.

Certificate of Survey

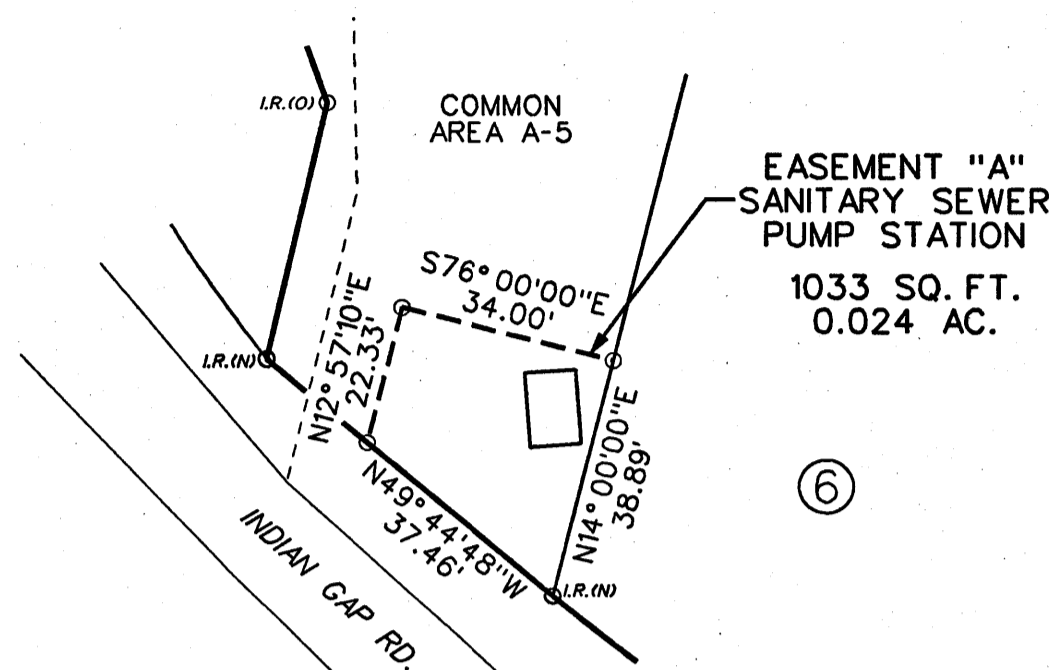
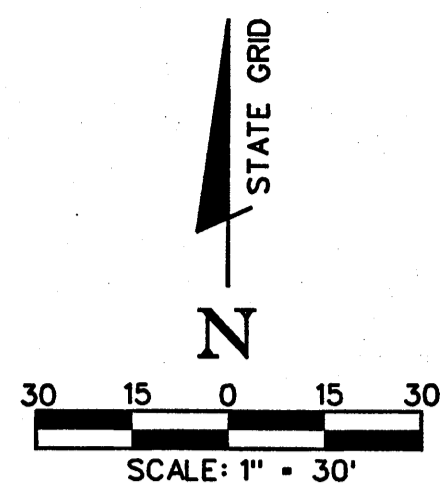
I hereby certify that this is a category 1 survey and the ratio of precision of the unadjusted survey is 1/12,000 as shown hereon. This survey has been prepared in accordance with The Standards of Practice for Land Surveys in the State of Tennessee.

*Timothy D. Robins* Tenn. Reg. No. 2044

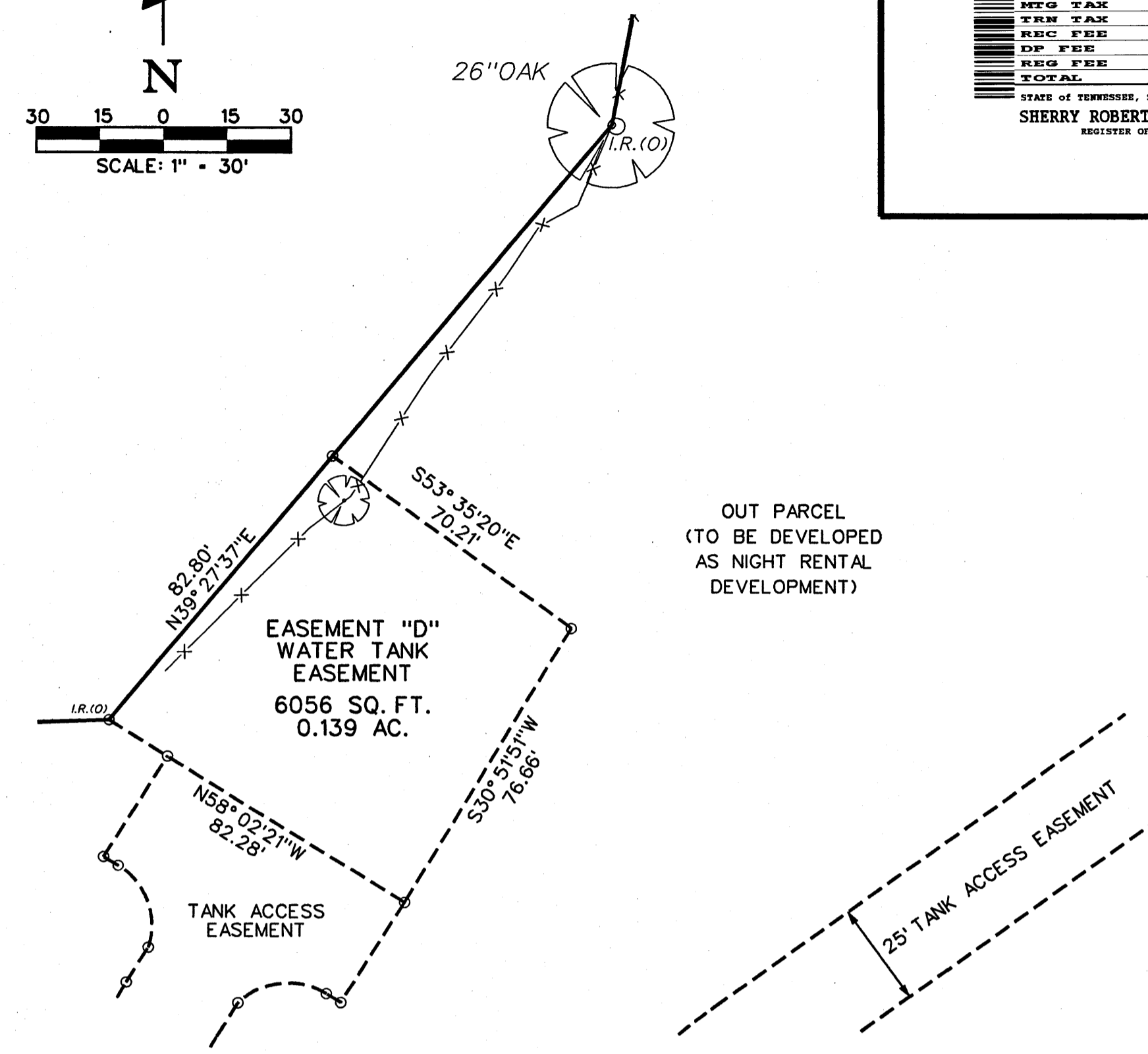
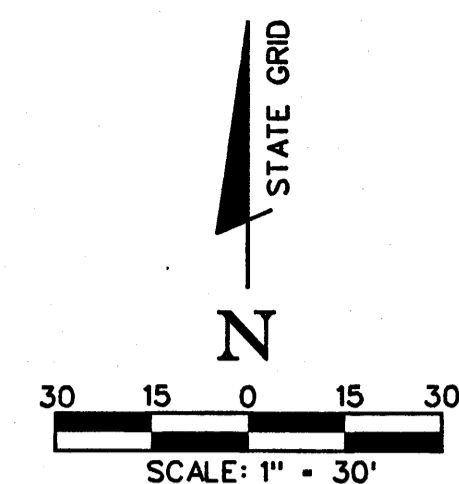
Date: 6-9-05

NOTES:

- IRON RODS WITH CAPS SET AT ALL CORNERS NOT RECOVERED UNLESS OTHER MONUMENTATION IS NOTED ON DRAWING.
- UNDERGROUND UTILITIES SHOWN APPROXIMATELY BY AVAILABLE UTILITY MAPS AND VISIBLE APPURTENANCES AND LOCATIONS SHOULD BE VERIFIED BY THE APPROPRIATE UTILITY AUTHORITY BEFORE EXCAVATION OR CONSTRUCTION.
- CLT TAX MAP 37 PARCEL 1
- REFERENCE RECORDED PLATS IN LARGE MAP CABINET 3, PAGES 115 AND 166. PROPOSED LOTS ARE SUBJECT TO PLANNED UNIT DEVELOPMENT DOCUMENTS RECORDED IN W.D. BOOK 1225, PAGE 783; WITH AN ANNEXATION OF ADDITIONAL LANDS IN W.D. BOOK 1466, PAGE 702. ALSO SUBJECT TO FINAL ORDER IN SEVIER COUNTY CHANCERY COURT DOCKET NO. 04-6-245.
- DEED REFERENCE: W.D. BK. 1119, PG. 172; W.D. BK. 1119, PG. 665; AND IN W.D. BK. 1161, PG. 505.
- LOT LINES, RIGHT-OF-WAYS AND LOT NUMBERS AS SHOWN IN PHASES 1 AND 2 OF EAGLE SPRINGS SUBDIVISION REFERENCED ABOVE ARE HEREBY DELETED.
- TOTAL DEVELOPMENT AREA: 6,437,282 SQ. FT. OR 147.780 ACRES.
- TOTAL NUMBER OF LOTS: 160, (LOT 151 WAS OMITTED)
- PROPERTY IS SUBJECT TO A PERIPHERY BOUNDARY SETBACK OF 10' ALONG THE SIDES AND REAR BOUNDARY LINES.



EASEMENT "A"

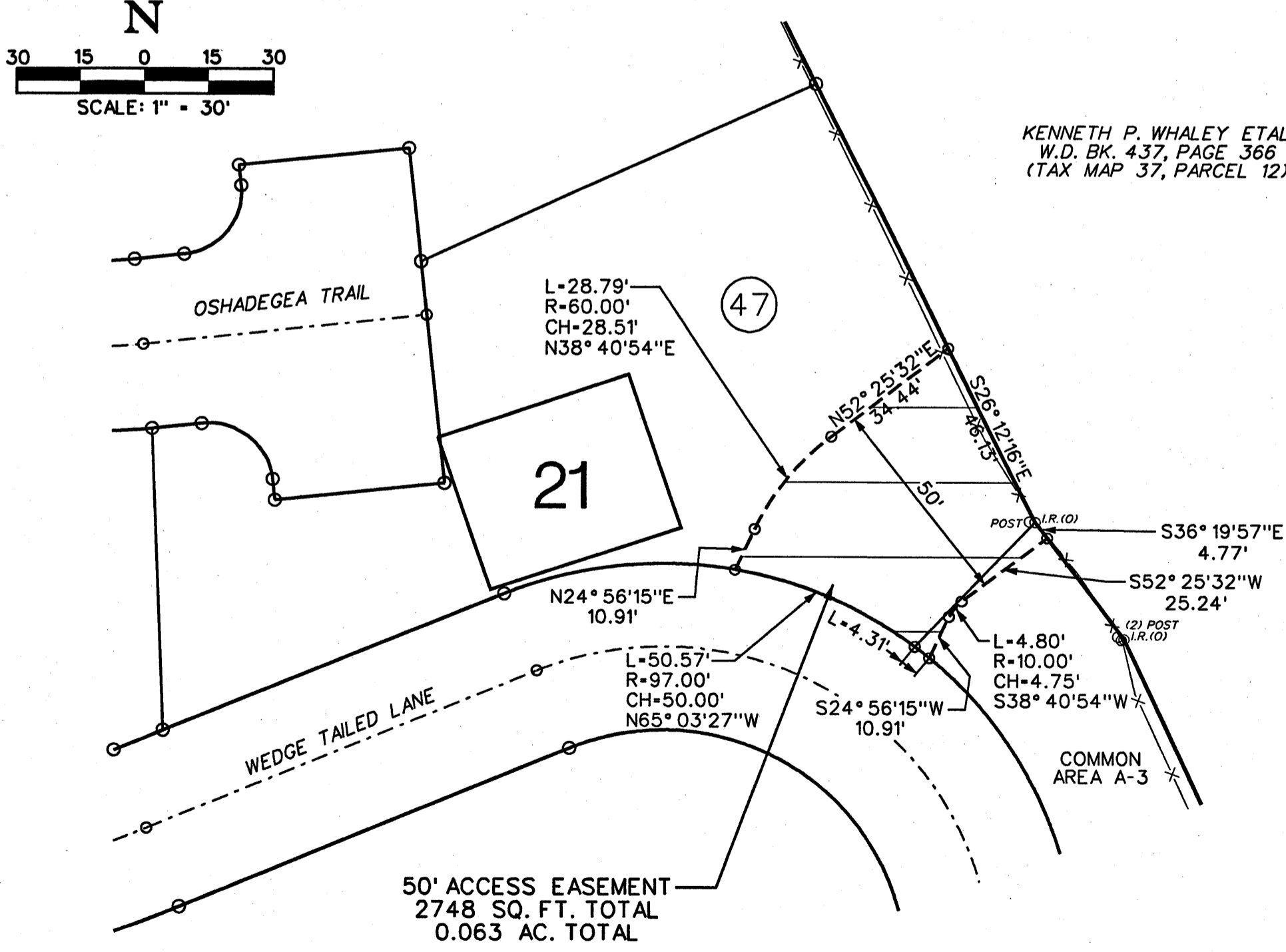
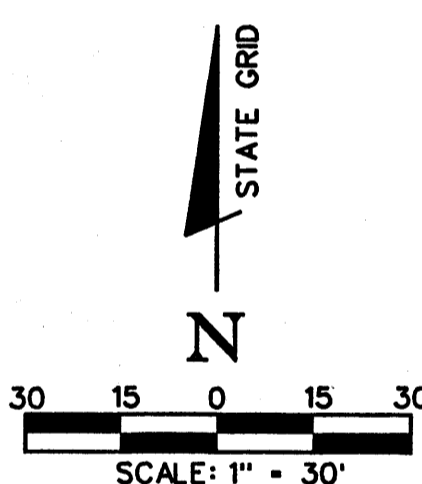


EASEMENT "D"  
(TANK)

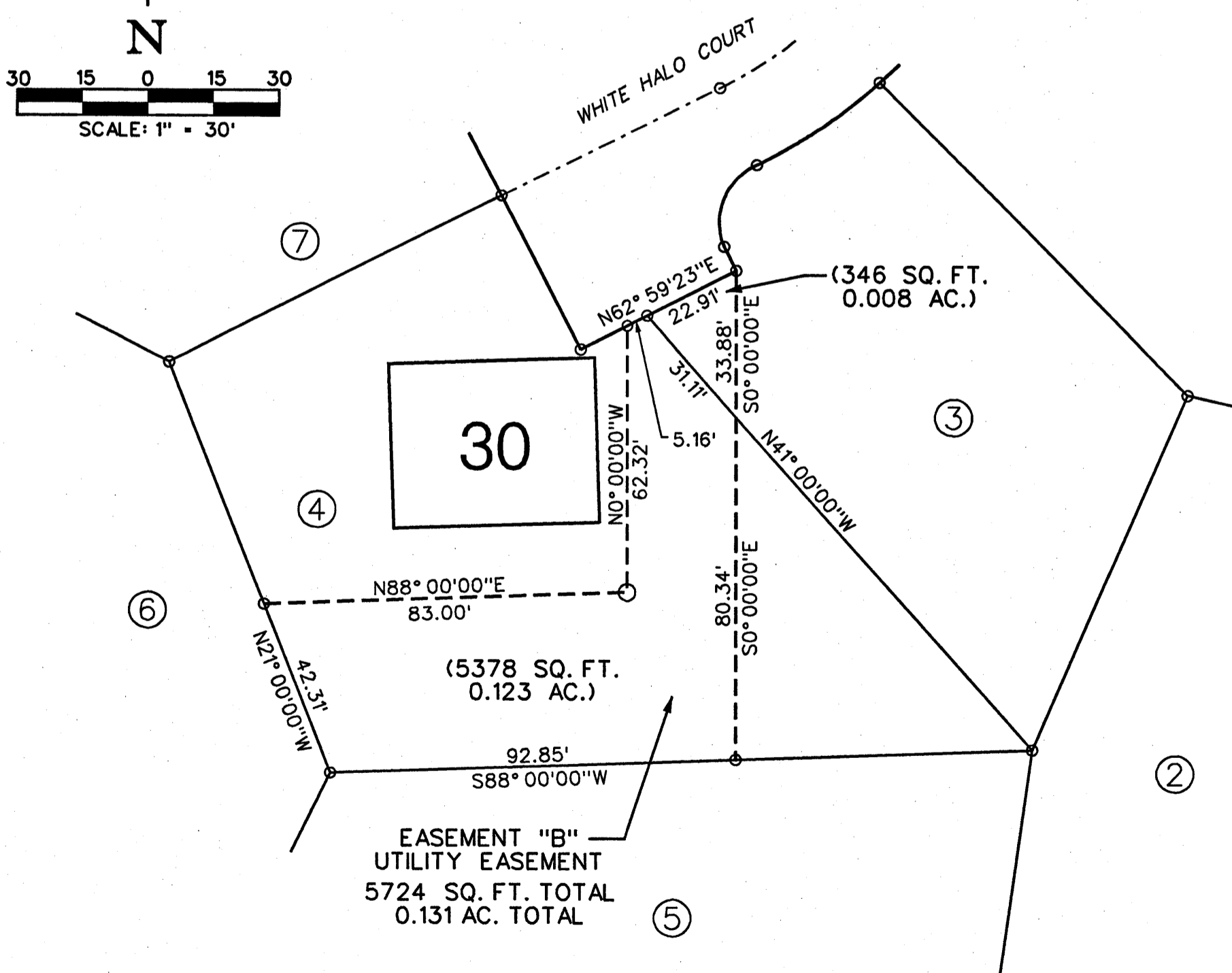
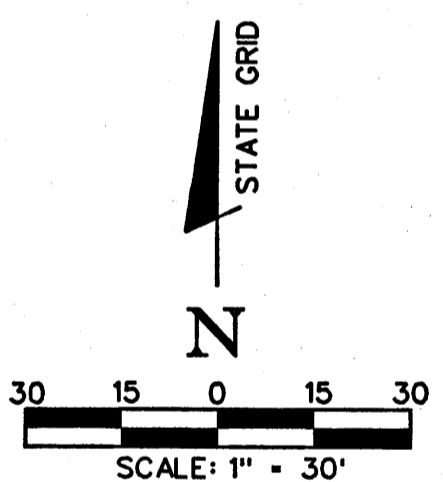
VOL: LM6/118-118  
05031420

LM 1 PG 04: 62785
06/23/2005 01:45 PM
VALUE: 0.00
MTG TAX: 0.00
TEN TAX: 0.00
REC FEE: 75.00
DP FEE: 2.00
REG FEE: 0.00
TOTAL: 77.00

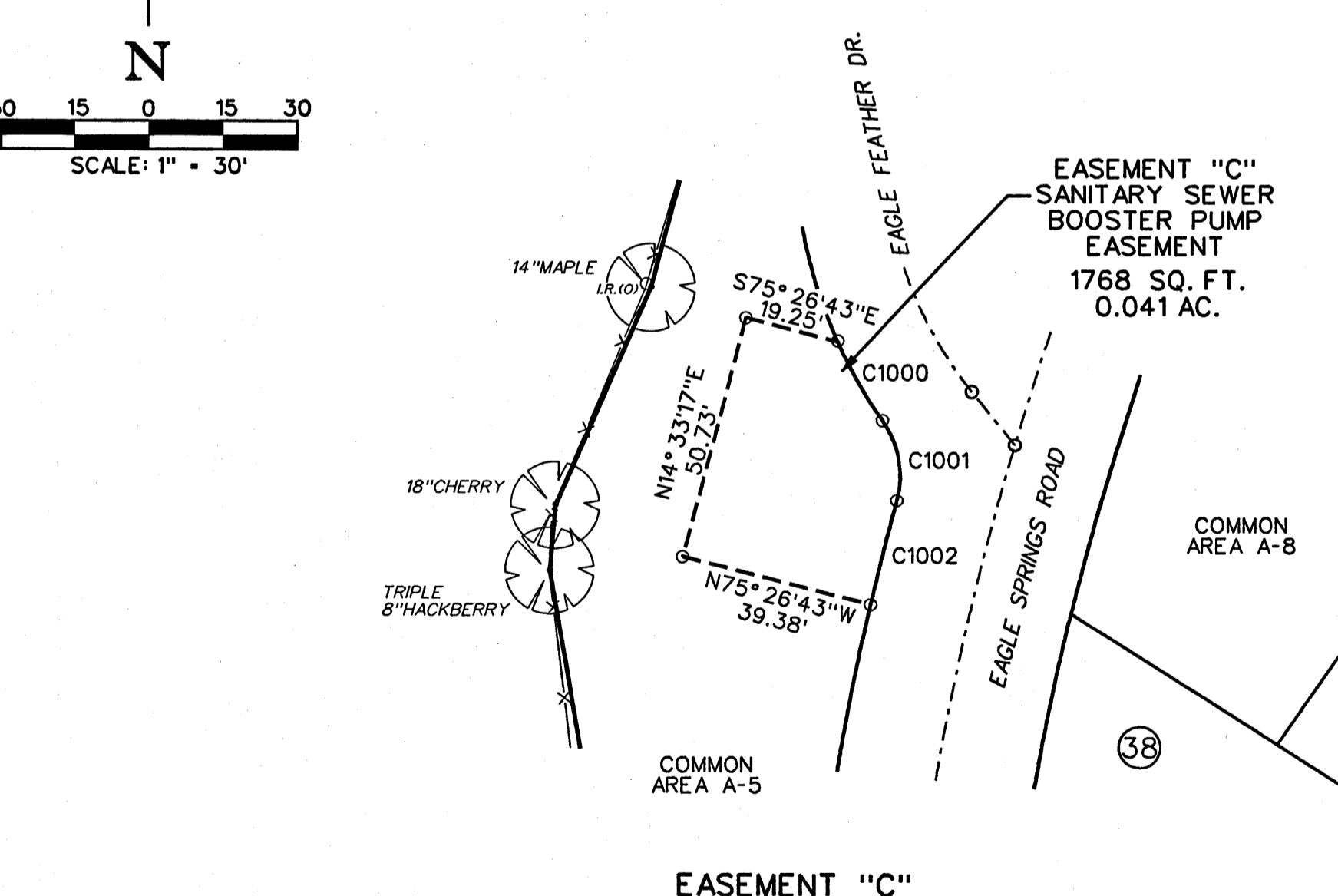
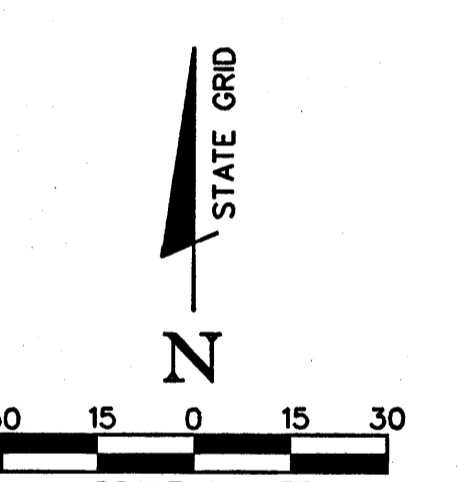
STATE OF TENNESSEE, SEVIER COUNTY  
SHERRY ROBERTSON HUSKEY  
REGISTERED SURVEYOR



ACCESS EASEMENT



EASEMENT "B"



EASEMENT "C"

CURVE DATA TABLE

CURVE	LENGTH	RADIUS	CHORD	CHORD BEARING	DELTA
C1000	18.35'	98.00'	18.32'	S29°34'00"E	10°43'33"LT
C1001	17.30'	20.00'	16.77'	S10°08'57"E	49°33'36"RT
C1002	22.35'	620.00'	22.35'	S13°35'53"W	2°03'55"LT

LEGEND:

- PROPERTY LINE
- (I.R.10) EXISTING IRON ROD FOUND
- (I.R.00) NEW IRON ROD SET
- POST

**BWSC** BARGE WAGGONER BLUNNER & CANNON, INC.  
ENGINEERS ARCHITECTS PLANNERS  
LANDSCAPE ARCHITECTS AND SURVEYORS  
514 2400 First Tennessee Plaza, Knoxville, Tennessee 37929  
Phone (865) 637-2800 Fax (865) 673-8554

FINAL PLAT  
**EAGLE SPRINGS SUBDIVISION**  
SHEET 5 OF 5  
FOURTEENTH CIVIL DISTRICT, SEVIER COUNTY, TENNESSEE

TAX CARD OWNER:  
DEER PATH VACATIONS L.P.  
2788 WINDFALL ESTATES DRIVE  
SEVIERVILLE, TENNESSEE 37876

PREPARED FOR:  
EAGLE SPRINGS RESORT  
OWNERS ASSOCIATION, INCORPORATED  
2788 WINDFALL ESTATES DRIVE  
SEVIERVILLE, TENNESSEE 37876

DRAWN BY: TDR  
DATE: 05-27-05  
REVISED: 06-09-05  
FILE NO. 31091-00